



Urban Stream Restoration Case Study: Parkerson Mill Creek



Eve Brantley, PhD, Extension Specialist and Assoc. Professor
Department of Crop, Soil and Environmental Sciences
Auburn University

Acknowledgments:

Dan Ballard and Dusty Kimbrow, City of Auburn

Ben Burmester, Auburn University Facilities

Caleb Duke, Auburn University, Crop, Soil, & Env Sciences

Alabama Department of Environmental Management

Environmental Protection Agency, Region 4

Goodwyn, Mills, and Cawood, Inc

Jennings Environmental, LLC

North State Environmental

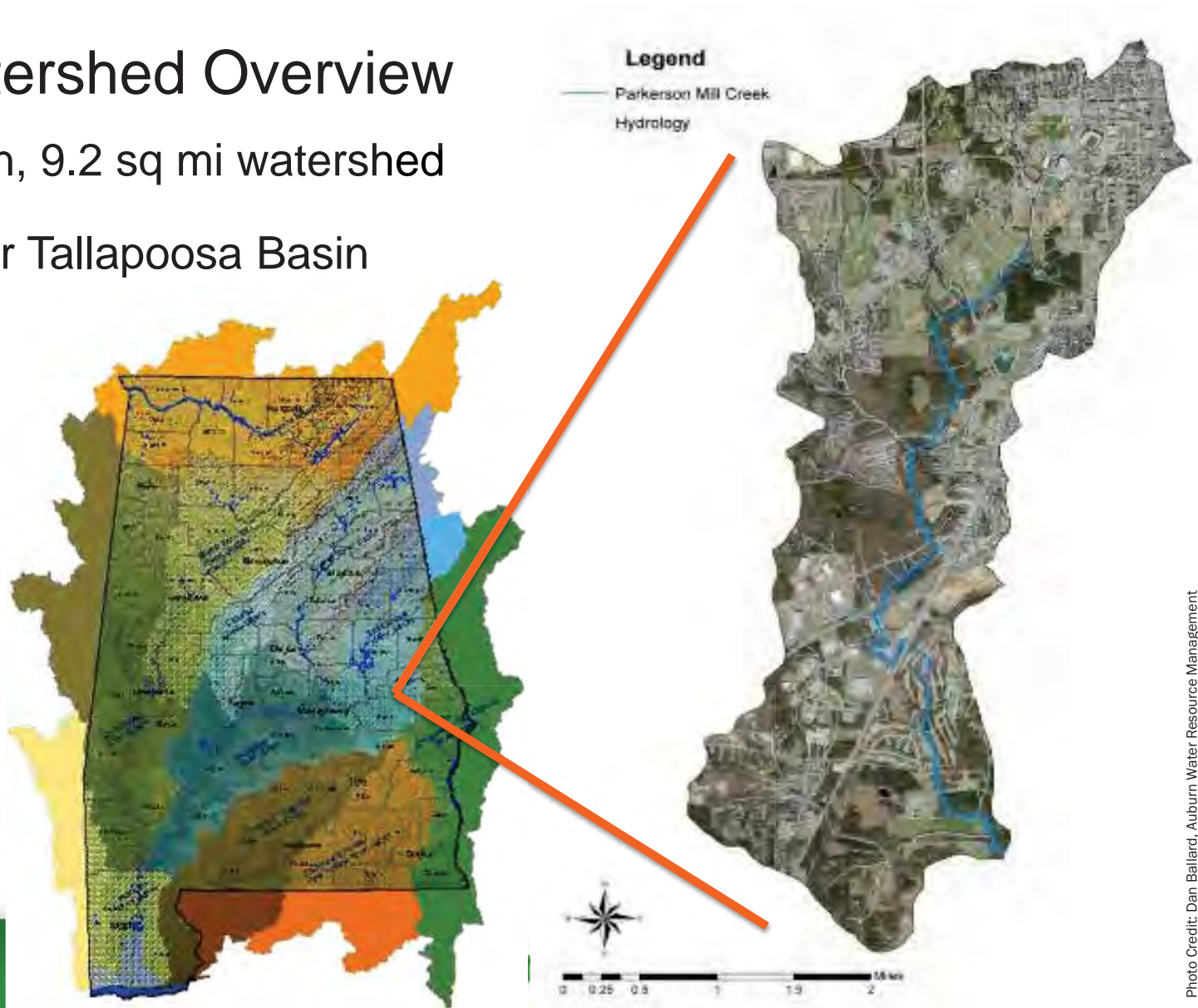
Erosion Pros, Inc



Watershed Overview

Urban, 9.2 sq mi watershed

Lower Tallapoosa Basin



1. Opportunity to improve local resource

Quality of life

Community amenity

Outdoor classroom

2. Regulatory requirement

E. coli Total Maximum Daily Load

Phase II stormwater rules









2006



2003



2007

















2013

2014

PMC – Wellness Kitchen







Project Overview:

Funding Auburn University, ADEM Section 319 (a little)

Goals include improved stability, improved water quality & habitat, aesthetics, outdoor classroom, public education

Construction June-July 2014

105 m length

Stilling basin

3 boulder cross vanes

Floodplain bench

Native vegetation

June 2014



June 2014

















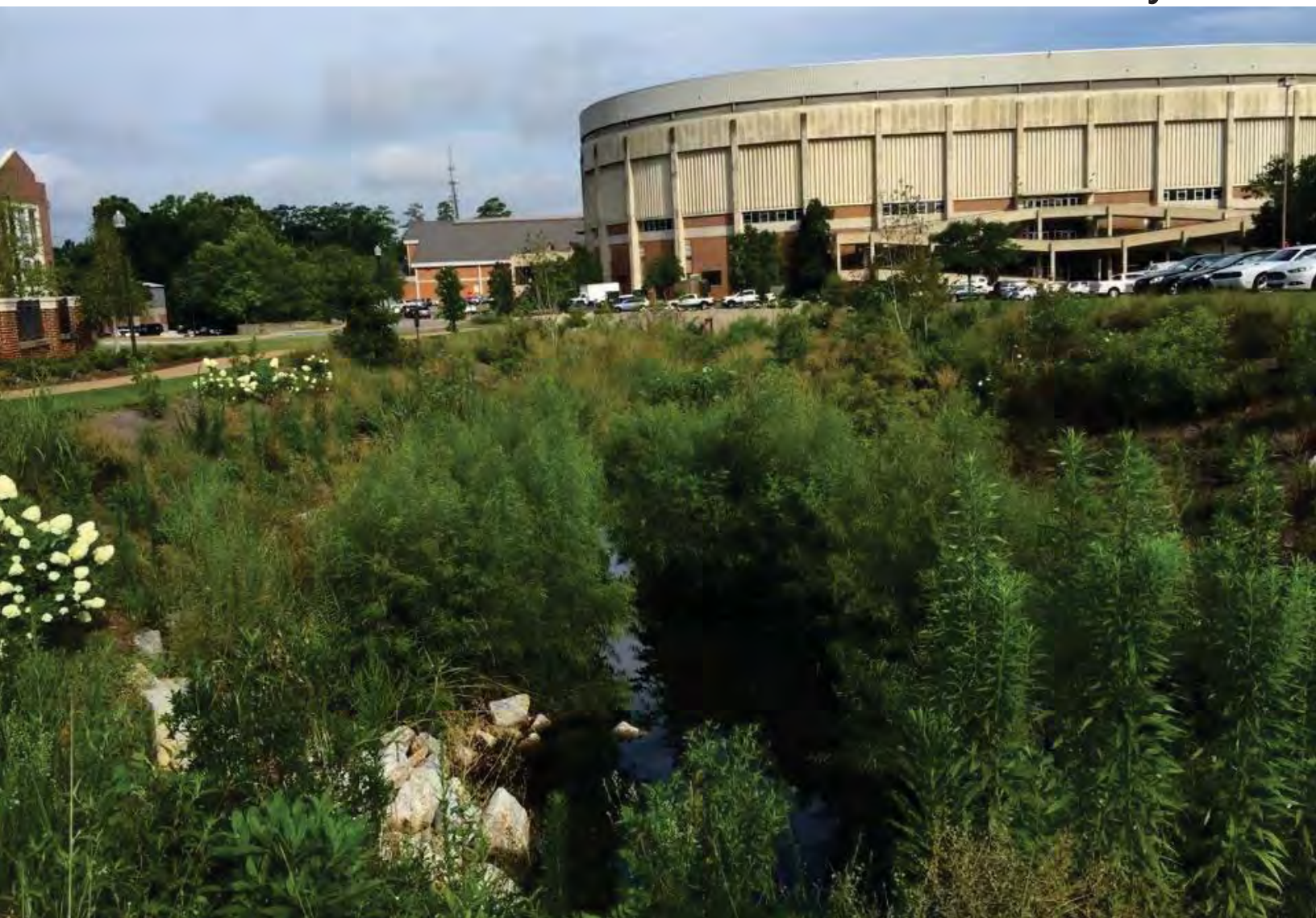
2016 April



All good? Are we finished?



July 2016





AU Policy for Natural Resources Management Areas – Approved May 2016

II. POLICY PRINCIPLES

A. The University campus includes Natural Resource Management Areas designated for preservation, rather than development.

4. These valuable natural resources are an integral part of the campus environment.

1. Restore, improve, and protect water quality by:

- a. Conducting Stream and Wetland Determinations as part of project and construction processes to identify all existing Intermittent Streams, Perennial Streams, and Wetlands;**
- b. Maintaining Open Channel conditions;**
- c. Removing Invasive Vegetation and establishing Native Vegetation;**
- d. Maintaining Stream & Wetland Buffers per Table 1 on each side of all Perennial Streams, Intermittent Streams, and Wetlands;**

1. Restore, improve, and protect water quality by:

- a. Conducting Stream and Wetland Determinations as part of project and construction processes to identify all existing Intermittent Streams, Perennial Streams, and Wetlands;**
- b. Maintaining Open Channel conditions;**
- c. Removing Invasive Vegetation and establishing Native Vegetation;**

4. Maintain Stream & Wetland Buffers per Table 1 on each side of all Perennial

Downstream – Parkerson Mill Creek, Turf Unit







The background image shows a natural stream environment. In the foreground, there are large, light-colored rocks partially submerged in the water. The water is calm, reflecting the surrounding greenery. The banks are covered with dense vegetation, including various shrubs and trees. The overall scene is a lush, natural landscape.

Project Overview:

Funding City of Auburn

Construction November-December 2015

60 m length

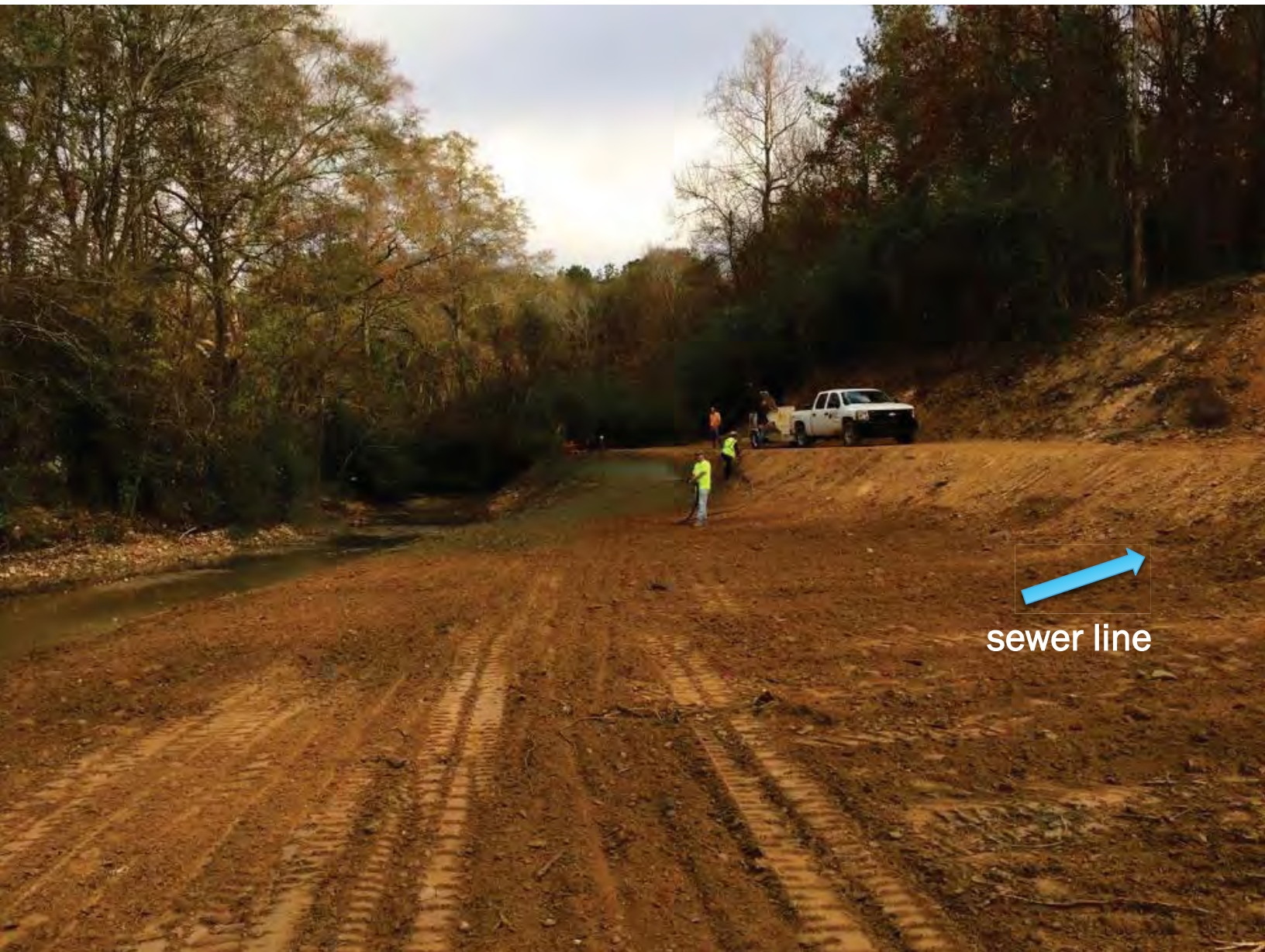
1 boulder vane


1 log j-hook

Floodplain bench

Native vegetation

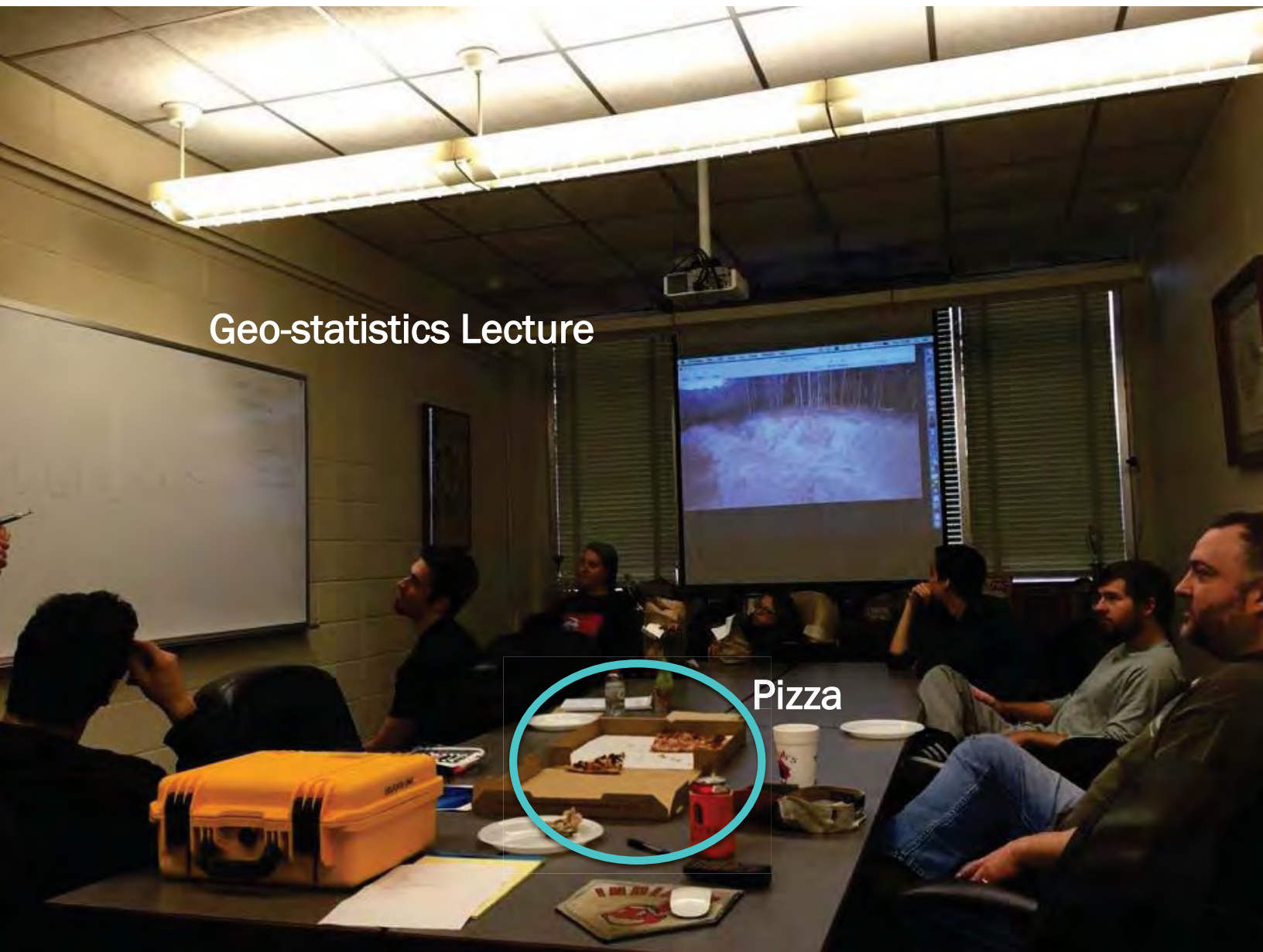





sewer line

Geo-statistics Lecture

Pizza









12/24/2015 6:38 AM













October 2016



October 2016



October 2016





What does success look like?







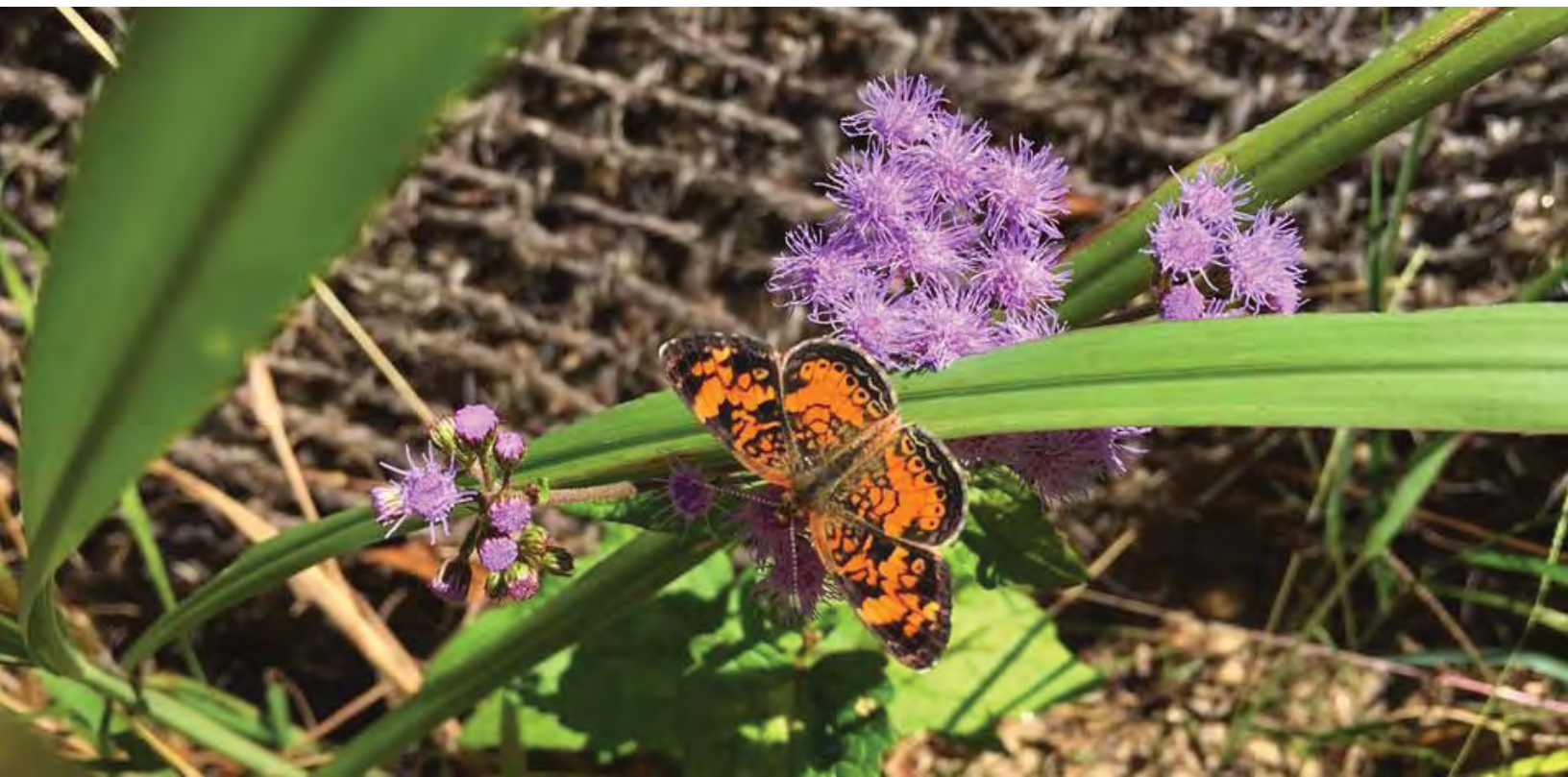
Thank you and Questions?

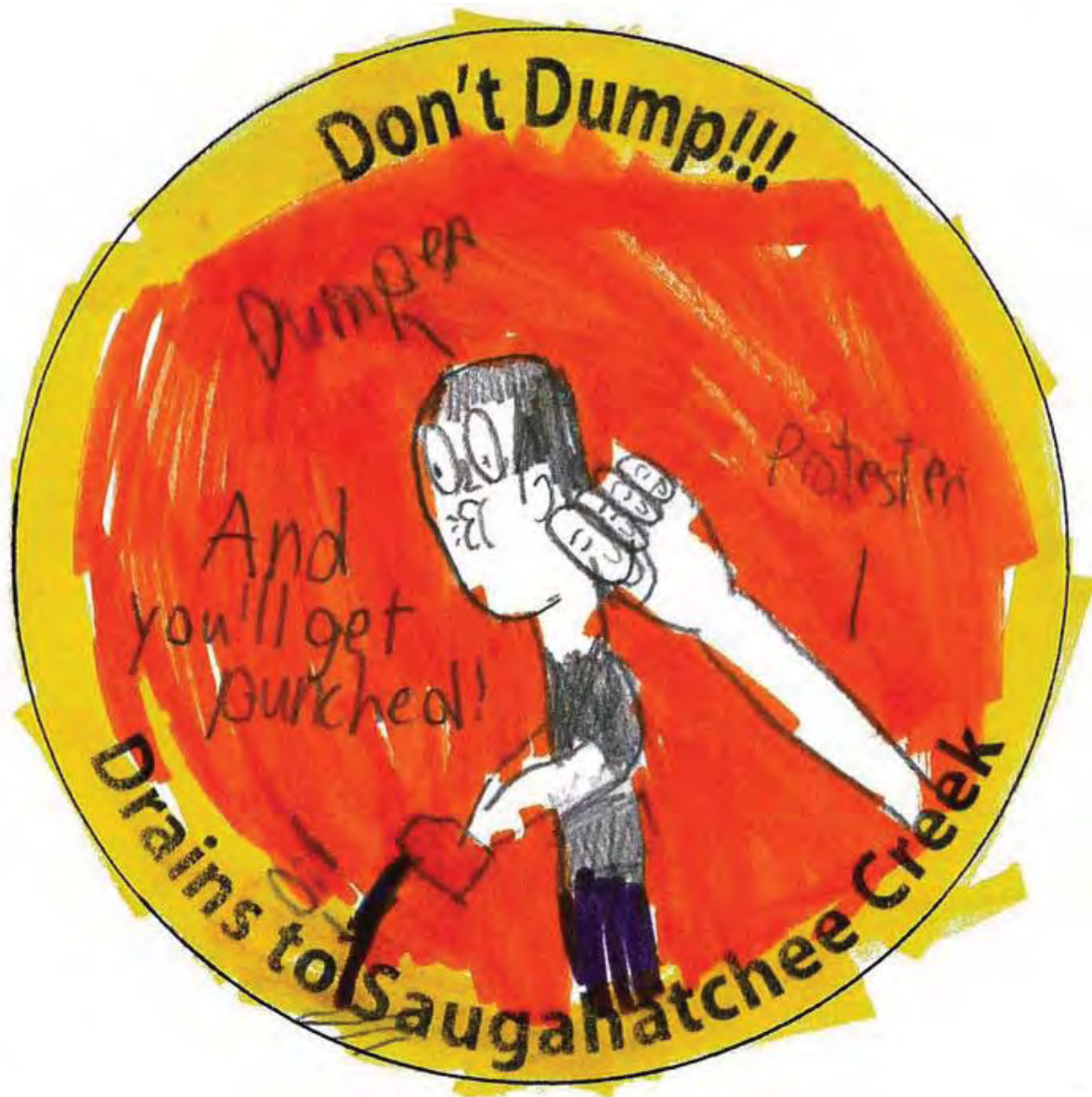
brantley@auburn.edu

Twitter @brantef

Instagram AcesWater

Facebook Alabama Extension Water





Video Link

<https://youtu.be/IraH-HxrQCI>